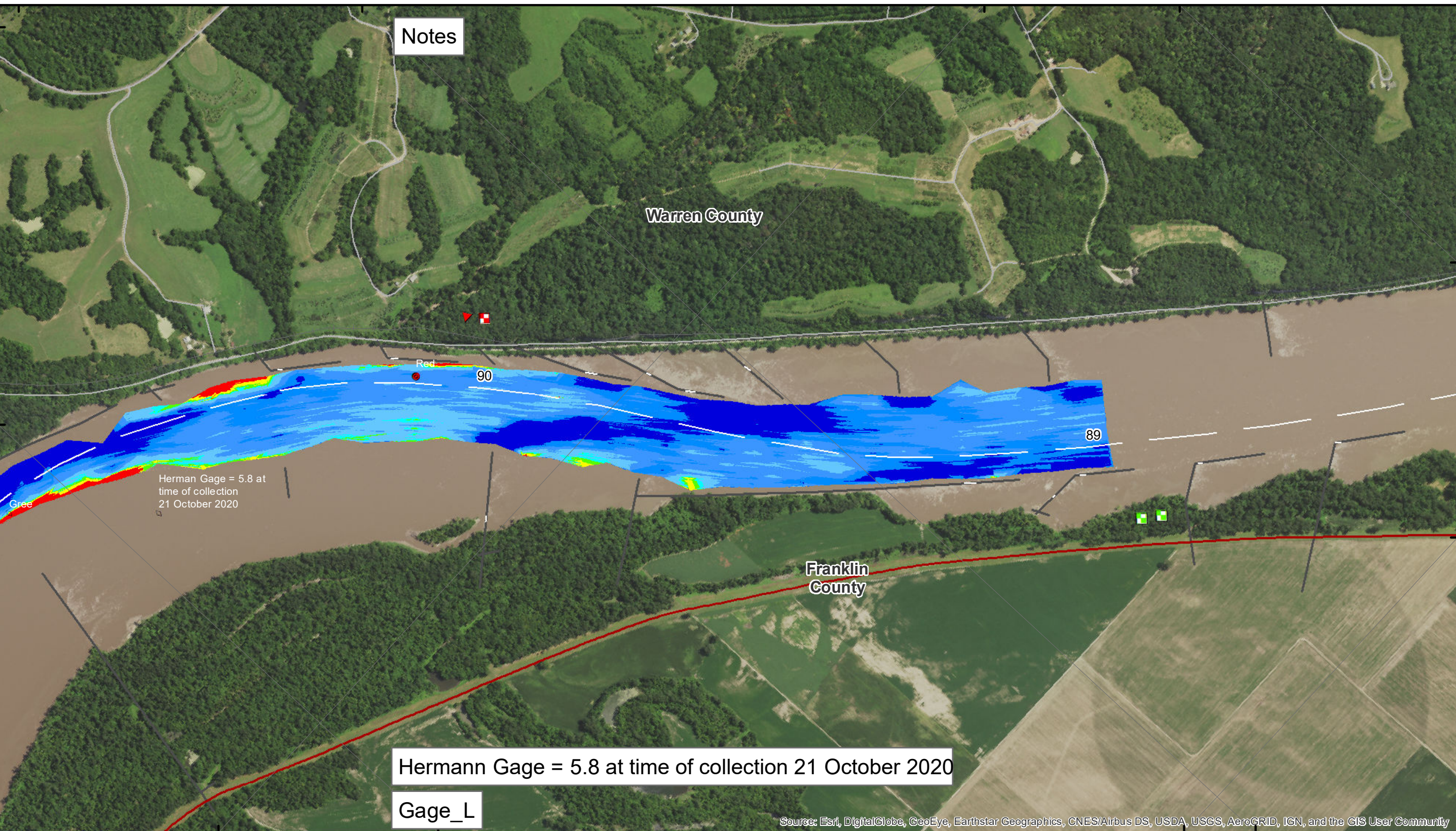


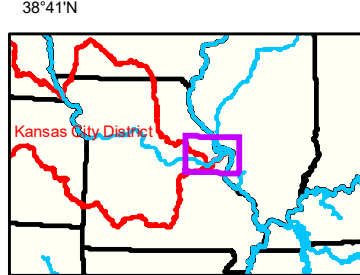
38°43'N 91°18'W 38°41'N 91°17'W



Disclaimer: The U.S. Army Corps of Engineers (USACE) provides this information as a service to the public. It is not intended for use in any legal proceeding or for any other purpose. The USACE makes no warranty, express or implied, regarding the accuracy, reliability, or completeness of the information provided. The user assumes all liability for any use of this information. The USACE is not responsible for any errors or omissions in this information. The USACE is not responsible for any damage or loss resulting from the use of this information. The USACE is not responsible for any delay in the delivery of this information. The USACE is not responsible for any other matter related to this information.

KANSAS CITY DISTRICT MISSOURI RIVER AREA OFFICE	
Submitted By:	MIRAO
Reviewed By:	MIRAO
Approved By:	MIRAO

Survey Information
 MO_01_LMR
 MO_01_LMR_20201021_CS_88_0_92_0_SORT
 21 October 2020



LEGEND

			Green Passing		Green		Green CAN
			Red Passing		Red		Red NUN
			Green Crossing		Red		
			Red Crossing		Junction		

Buoy

Green CAN
 Red NUN

Scale: 0 312.5 625 937.5 1,250 2,500 Feet

NOTES:
 Horizontal Coordinate System: World Geodetic System of 1984 (WGS84), projected to the Universal Transverse Mercator (UTM) Zone 15 North. Distance units in U.S. Survey Feet.
 Vertical Datum: Soundings are shown in feet and indicated depths are referenced to water surface at time of collection.
 The information depicted on this map represents the results of a survey conducted on the date indicated and can only be considered to represent the general condition existing at that time.
 The location of navigation aids are based on and provided by the U.S. Coast Guard.

Sheet Number
 41 of 46

38°43'N

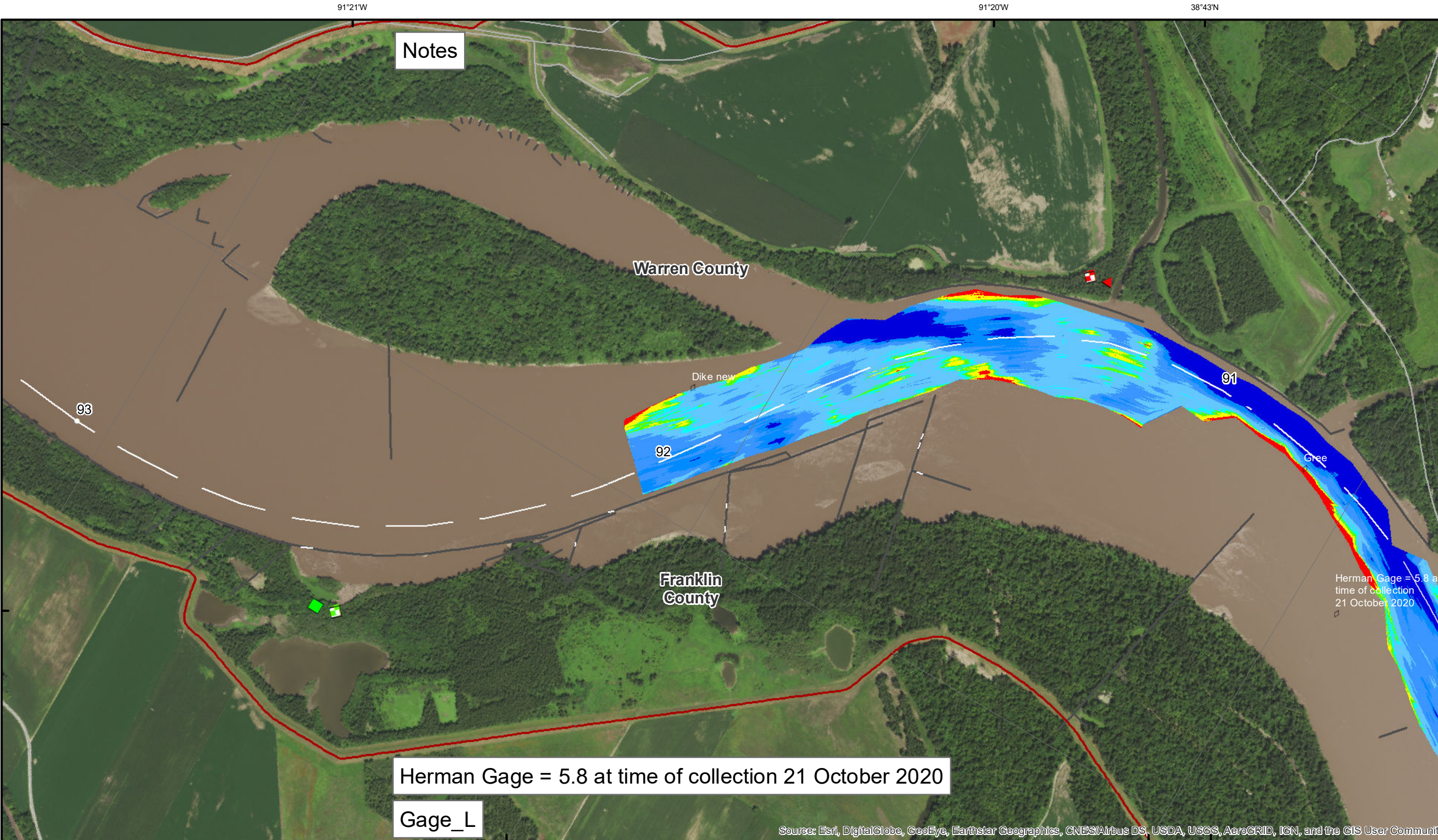
91°18'W

91°17'W

38°41'N

38°41'N 91°18'W

Source: Esri, DigitalGlobe, GeoEye, Earthstar Geographics, CNES/Airbus DS, USDA, USGS, AeroGRID, IGN, and the GIS User Community



Notes

Herman Gage = 5.8 at time of collection 21 October 2020

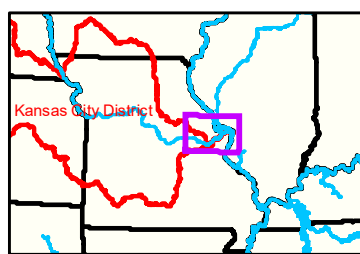
Gage_L



DISCLAIMER: The U.S. Army Corps of Engineers provides this information as a service to the public. It is not intended to be used for any purpose other than that for which it was prepared. The Corps makes no warranty, express or implied, as to the accuracy, reliability, or completeness of the information. The user assumes all liability for any use of the information. The U.S. Army Corps of Engineers is not responsible for any damage or loss resulting from the use of this information. The user agrees to hold the U.S. Army Corps of Engineers harmless from any and all claims, damages, or liabilities, including reasonable attorneys' fees, arising from the use of this information. The user also agrees to indemnify and hold the U.S. Army Corps of Engineers harmless from any and all claims, damages, or liabilities, including reasonable attorneys' fees, arising from the use of this information.

KANSAS CITY DISTRICT MISSOURI RIVER AREA OFFICE	
Submitted By:	MIRAO
Reviewed By:	MIRAO
Checked By:	MIRAO
Approved:	

Survey Information
 MO_01_LMR
 MO_01_LMR_20201021_CS_88_0_92_0_SORT
 21 October 2020



91°20'W 91°19'W 38°41'N

<ul style="list-style-type: none"> < 8 8 - 9 9 - 9.5 9.5 - 10 10 - 12 12 - 14 14 - 16 > 16 	<ul style="list-style-type: none"> < 8 ft 8 - 9 ft 9 - 10 ft 10 - 12 ft River Mile Sailing Line BSNP Structure Levee 	<p>LEGEND</p> <ul style="list-style-type: none"> Green Passing Red Passing Green Crossing Red Crossing 	<ul style="list-style-type: none"> Green Buoy Red Buoy Junction 	<ul style="list-style-type: none"> Green CAN Red NUN
--	---	---	--	--

Feet
0 312.5 625 937.5 1,250 2,500

NOTES:
 Horizontal Coordinate System:
 World Geodetic System of 1984 (WGS84), projected to the Universal Transverse Mercator (UTM) Zone 15 North.
 Distance units in U.S. Survey Feet
 Vertical Datum:
 Soundings are shown in feet and indicated depths are referenced to water surface at time of collection.
 The information depicted on this map represents the results of a survey conducted on the date indicated and can only be considered to represent the general condition existing at that time.
 The location of navigation aids are based on and provided by the U.S. Coast Guard.

Sheet Number
42 of 46